



INSITE4

The Complete Business Process Management Solution

Life Cycle and Deployment Management

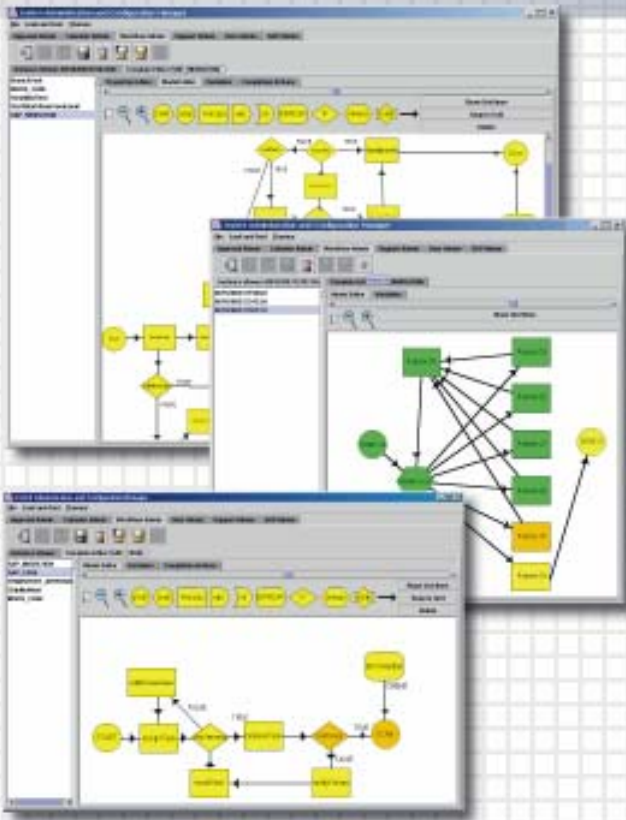
INSITE4 enables you to define, enforce and audit a custom process for managing changes to your systems, including SAP R/3™. From new reports... to new business... to new releases, INSITE4 controls the changes from initial concept through scope and priority exercises, and then automatically transports the changes through your landscape and into production based on your process flow requirements. And INSITE4 will provide you with a complete project history and audit trail unequaled by any other tool to support any compliance initiative like Sarbanes-Oxley, FDA or ISO.

Sound Familiar?

- Our auditors say we need to document all changes applied to SAP™ and provide a secure audit trail of all the approvals for the new Sarbanes-Oxley compliance initiative. I thought the spreadsheets would be enough. What do I do now?
- I wish there was a way to relate the original user request to the transports in SAP™.
- My objects keep getting overridden after I make changes and move them. I wish we all new what objects were being changed so we could coordinate the moves.
- I released my change two days ago and have no idea whether it's been approved, moved or where it is.
- There's a problem with our production system this morning. What was changed over the weekend and who approved it?

INSITE4 is able to bring you all this by employing the following:

- A fully independent and configurable workflow engine with integrated approval cycles
- The use of “push” technology, bringing work to the user via the e-mail interface when it is created rather than waiting for them to log in and find it
- Integration with SAP's Correction and Transport System (CTS) as well as other program repositories to give you fully automated migration processing within the constraints of your defined process
- Full object management for SAP and non-SAP objects
- An INSITE4 database to provide history and metrics for all your processes

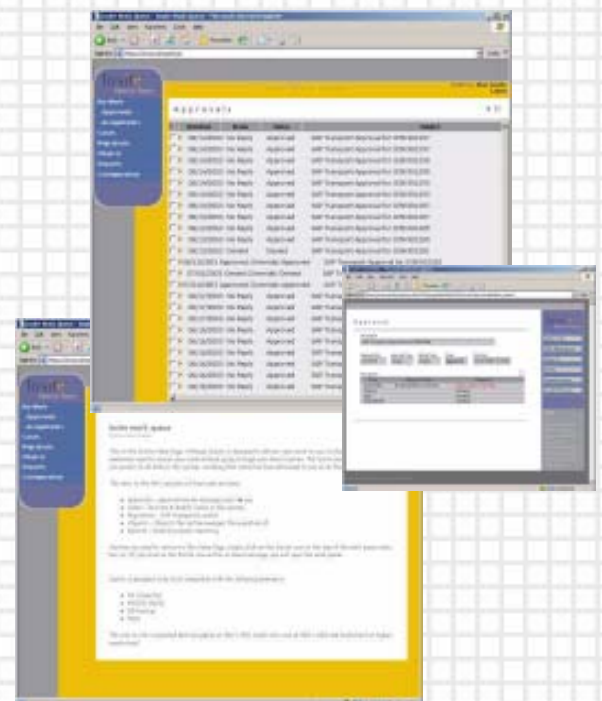


The INSITE4 workflow engine manages the process.

- Fully configurable approval, assignment, and decision steps
- Attachments allow the users to manage all documentation associated to the process
- Agents can be employed to monitor systems or events and initiate new processes based on defined criteria
- Branching to sub-processes facilitates the management of your most complex processes
- The calendar easily handles the most rigorous scheduling requirements and is fully integrated with the entire process
- The independent workflow engine manages communication with multiple systems and organizations so any and all processes can be mapped through it

INSITE4's "push" technology makes it easy for users to interface with the process and complete their work in a shorter period of time.

- INSITE4 employs the use of "Information Objects" to deliver the necessary GUI to the user through their standard e-mail so they can complete their tasks right from within the e-mail
- Reduced training required because the Information Objects deliver instructions to complete the required task and reduce the unnecessary overhead of learning system navigation
- The push technology is backed up by a full work queue giving users an alternate way to access their work should they choose
- Whether access is via e-mail or the work queue, no client install is ever required to interface with INSITE4



INSITE4 is an enterprise level Deployment and Lifecycle Management System.

- Manages the migration of your system changes whether they are SAP, Java, .NET, Portals, or other proprietary and/or open systems.
- Integrates with SAP's CTS to fully automate the movement of objects across your landscape, including all backfills
- All migrations can be accomplished without human intervention and they can be based on any predefined schedule and/or criteria
- Manages the movement of all cross system objects under a single functional change and maintains the entire history of the change in one place
- Defines business rules based on factors such as import order, mandatory fields, special transports, and release management to control timing and approval cycles of migrations
- Automates notification about any successful or problem migration and delivers them by e-mail or pager

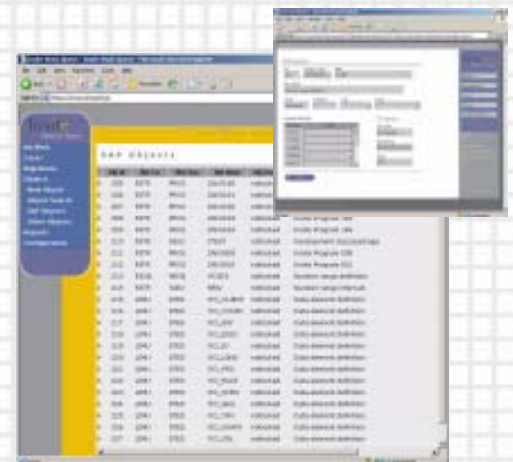


INSITE4 maintains a history of all objects.

- Manages SAP and non-SAP objects under the same Case to give a full history of a change whether totally inside SAP or in conjunction with other systems in addition to SAP
- Objects can be entered directly into the INSITE4 database or downloaded from the appropriate repository
- Establishes object ownership to promote notification to and/or approval by any defined individual person or group for any particular object or object class that is being changed

The INSITE4 database collects all data about Cases, Objects, Migrations, and Processes.

- Easily check the status of any active Case and review the progress to date
- Manage and refine processes based on metrics comprising all information about a process, department or user.
- Add tables to the database to facilitate the addition of new processes
- Easily write reports with the INSITE4 report writer



Insite Objects delivers INSITE4, another example of enabling business opportunity with innovative technology.

Insite Objects, Inc. is an employee-owned technology company where success is driven by combining business experience with the brightest technical innovators.

Since 1995, we have been first to implement such breakthrough solutions as:

- Fully integrated CTS workflow (1996).
- Automated unattended transport scheduler (1997).
- First independent SAP delta management technology (1998).
- First implementation of digital imaging recognition in a business application (Resite Recorder, 1999).
- Fully integrated SAP electronic performance support system (2001).
- First fully automated content publishing solution (2002).
- First database driven, email sourced workflow push technology (2003).
- First real-time, interactive edit technology for transaction recording (2004).
- First XML Store-based EPSS system (2004).



Insite Objects, Inc.
10777 Westheimer, Suite 925
Houston, Texas 77042
sales@insiteobjects.com
[713] 952-9822